

CONTACT ARRANGEMENT

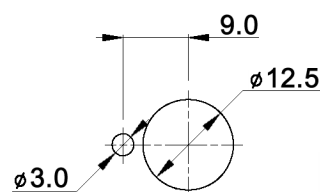
| code for x | function | toggle towards keyway | toggle opposite to keyway | actuation force typically |
|------------|----------|-----------------------|---------------------------|---------------------------|
| N | On-On | 1-2, 4-5 | 2-3, 5-6 | 2N +/- 1N |
| R | Mom-On | 1-2, 4-5 | 2-3, 5-6 | 2N +/- 1N |

| code for x | function | toggle towards keyway | toggle in center | toggle opposite to keyway | actuation force typically |
|------------|-------------|-----------------------|------------------|---------------------------|---------------------------|
| P | On-Off-On | 1-2, 4-5 | open | 2-3, 5-6 | 4N +/- 1N |
| S | Mom-Off-Mom | | | | |
| T | Mom-Off-On | | | | |
| PA | On-On-On | 1-2, 4-5 | 1-2, 5-6 | 2-3, 5-6 | 4N +/- 1N |
| SA | Mom-On-Mom | | | | |
| TA | Mom-On-On | | | | |

Specifications:

Contact rating: 3A, 250V AC / 6A, 125V AC
 4A, 30V DC / 5A, 12V DC
 6A, 6V DC
Contact resistance: 20mOhm max.
Insulation resistance: 1 000MOhm min. at 500V DC
Dielectric strength: 1 500V, 50Hz for the duration of 1 minute
Operating temperature: -45°C to +140°C
Mechanical life: min. 200 000 cycles (SA, TA: 100 000 cycles)
Soldering conditions: hand-soldering: max.: 420°C, 3sec., 60W
 auto-soldering: max.: 270°C, 5sec.
Mounting instruction: max. torque: 137Ncm
Material: Terminal / contact: brass, silver plated
 Case: DAP
 Housing: stainless steel, CNS9265
 Bushing: copper alloy, C3604BD nickel plated
 Actuator: copper alloy, C3604BD chrome plated

PANEL MOUNTING



Included accessories: 2 pcs. nut 15/32-32, nickel plated, 14mm wrench size
 1 pc. tooth washer
 1 pc. locking washer

Compliance: RohS III (2015/863/EU)

| Tolerances: | Date | Name |
|---------------|-------|------|
| 0.00: ±0.25mm | 04/09 | dr |
| 0.0: ±0.40mm | | |
| | | |
| | | |

MTG 206 x

| | | | |
|---------------------|-------|------|-----------------------|
| Function table | 10/19 | dr | knitter-switch |
| Contact arrangement | 07/10 | dr | |
| Modifications | Date | Name | |

30 18 02

Page
1/1